

Wind Technique Book

Low Brass

East Paulding Raider Brigade

M. Thomas

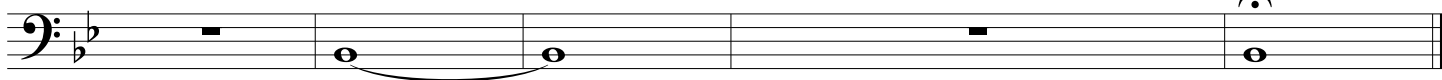
Exercise No. 1



9



18



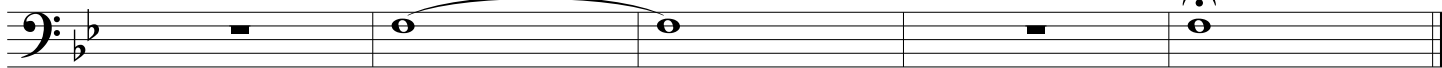
Exercise No. 2



9



18



Exercise No. 3



9



A single musical staff in bass clef with a key signature of one flat (B-flat) and a common time signature (C). The staff contains a whole rest in the first measure, followed by a slur over two half notes: G2 and F2. The second measure contains a whole rest. The third measure contains a whole rest. The fourth measure contains a whole note G2 with a fermata above it.

Exercise No. 4

A single musical staff in bass clef with a key signature of one flat (B-flat) and a common time signature (C). The staff contains a sequence of eighth notes: G2, F2, E2, D2, C2, B1, A1, G1. The notes are grouped into pairs with slurs: (G2, F2), (E2, D2), (C2, B1), and (A1, G1). Each pair is followed by a quarter rest.

9

A single musical staff in bass clef with a key signature of one flat (B-flat) and a common time signature (C). The staff contains a sequence of eighth notes: G2, F2, E2, D2, C2, B1, A1, G1. The notes are grouped into pairs with slurs: (G2, F2), (E2, D2), (C2, B1), and (A1, G1). Each pair is followed by a quarter rest.

Exercise No. 5

A single musical staff in bass clef with a key signature of one flat (B-flat) and a common time signature (C). The staff contains a sequence of eighth notes: G2, F2, E2, D2, C2, B1, A1, G1. The notes are grouped into pairs with slurs: (G2, F2), (E2, D2), (C2, B1), and (A1, G1). Each pair is followed by a quarter rest.

9

A single musical staff in bass clef with a key signature of one flat (B-flat) and a common time signature (C). The staff contains a sequence of eighth notes: G2, F2, E2, D2, C2, B1, A1, G1. The notes are grouped into pairs with slurs: (G2, F2), (E2, D2), (C2, B1), and (A1, G1). Each pair is followed by a quarter rest.

Exercise No. 6

A single musical staff in bass clef with a key signature of one flat (B-flat) and a common time signature (C). The staff contains a sequence of eighth notes: G2, F2, E2, D2, C2, B1, A1, G1. The notes are grouped into pairs with slurs: (G2, F2), (E2, D2), (C2, B1), and (A1, G1). Each pair is followed by a quarter rest.

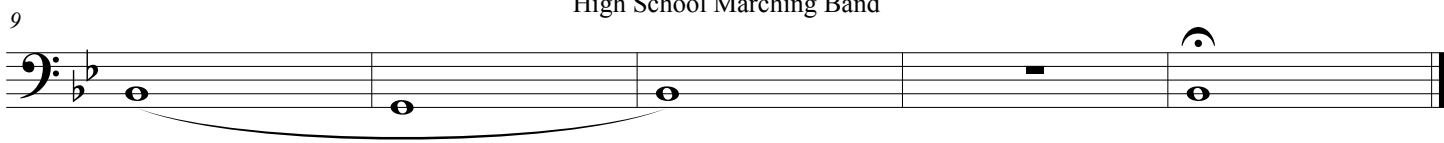
9

A single musical staff in bass clef with a key signature of one flat (B-flat) and a common time signature (C). The staff contains a sequence of eighth notes: G2, F2, E2, D2, C2, B1, A1, G1. The notes are grouped into pairs with slurs: (G2, F2), (E2, D2), (C2, B1), and (A1, G1). Each pair is followed by a quarter rest.

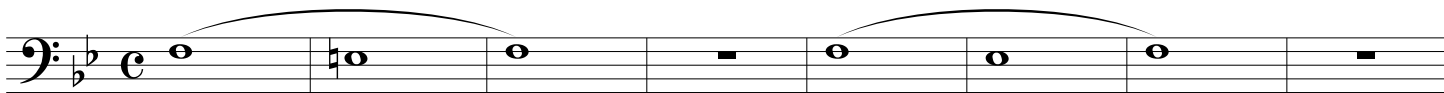
Exercise No. 7

A single musical staff in bass clef with a key signature of one flat (B-flat) and a common time signature (C). The staff contains a sequence of eighth notes: G2, F2, E2, D2, C2, B1, A1, G1. The notes are grouped into pairs with slurs: (G2, F2), (E2, D2), (C2, B1), and (A1, G1). Each pair is followed by a quarter rest.


9



Exercise No. 8



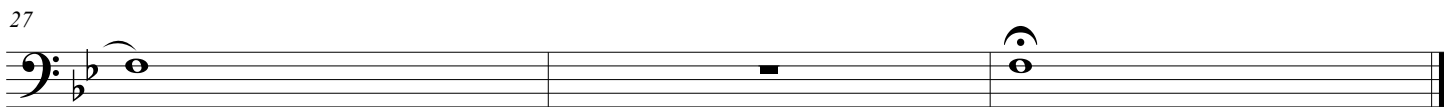
9



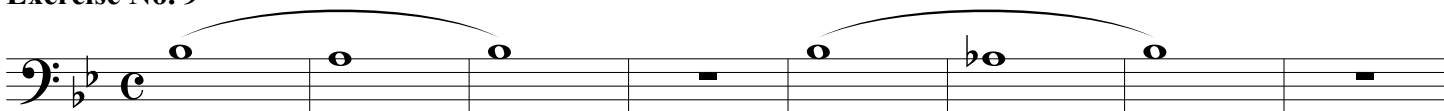
18



27



Exercise No. 9



9



18



27

Exercise No. 10

9

18

27

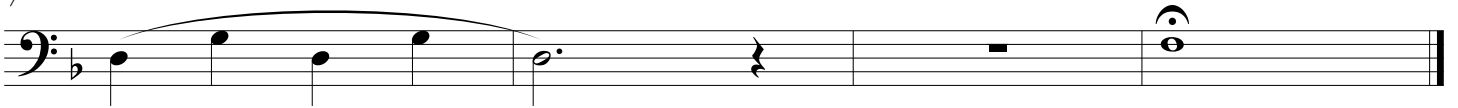
Exercise No. 11

Back up the
Valve Series

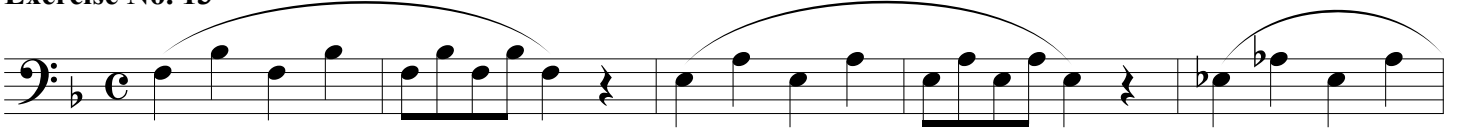
7

Exercise No. 12

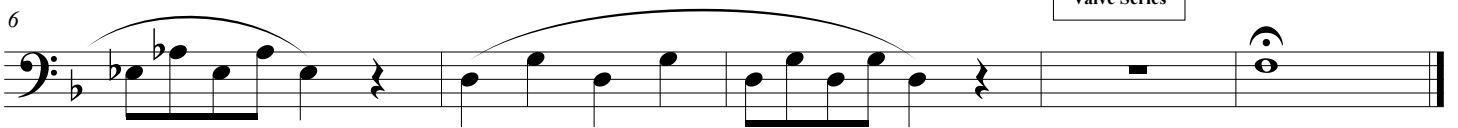
7



Exercise No. 13



6



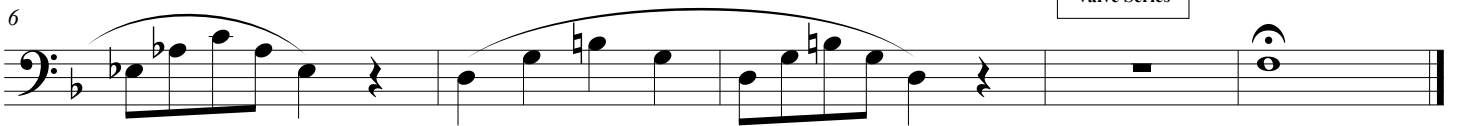
Back up the
Valve Series

Exercise No. 14

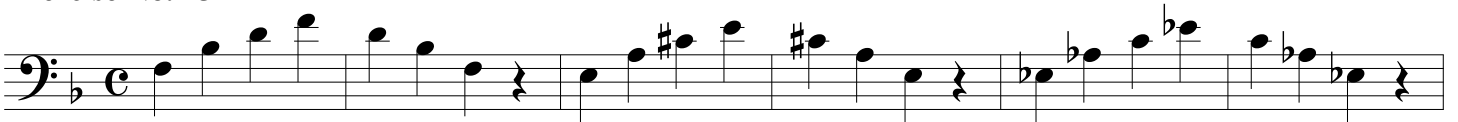


Back up the
Valve Series

6



Exercise No. 15



Back up the
Valve Series

7



Exercise No. 16



6

Wind Technique Book
High School Marching Band

6

12

17

22

27

Back up the
Valve Series

33

Exercise No. 17

6

11

11

Back up the
Valve Series

16

16

22

22

Exercise No. 18

1-6

7-11

12-15

Back up the
Valve Series

16

16-22

Exercise No. 19

1-6

6

10

14

Back up the Valve Series

Exercise No. 20

5

9

13

A

19

23

27

31

B

37

41

45

Exercise No. 21

5

10

Wind Technique Book
High School Marching Band

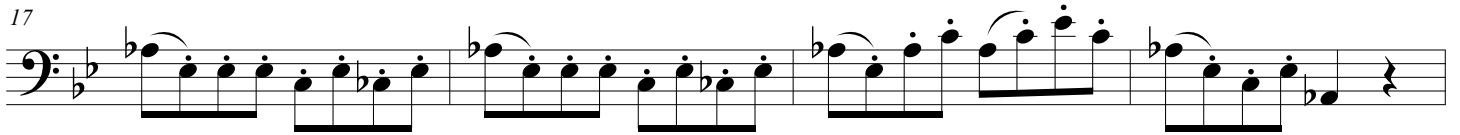
9



13



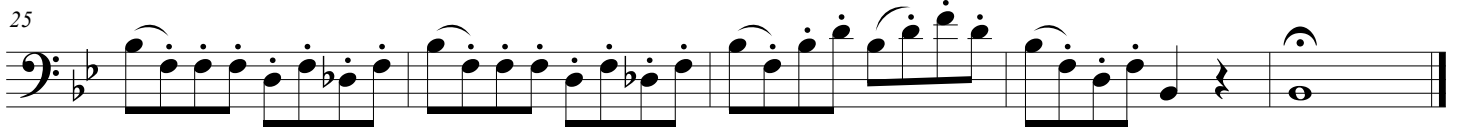
17



21



25



Exercise No. 22



6



11



16



21



26



31



36

