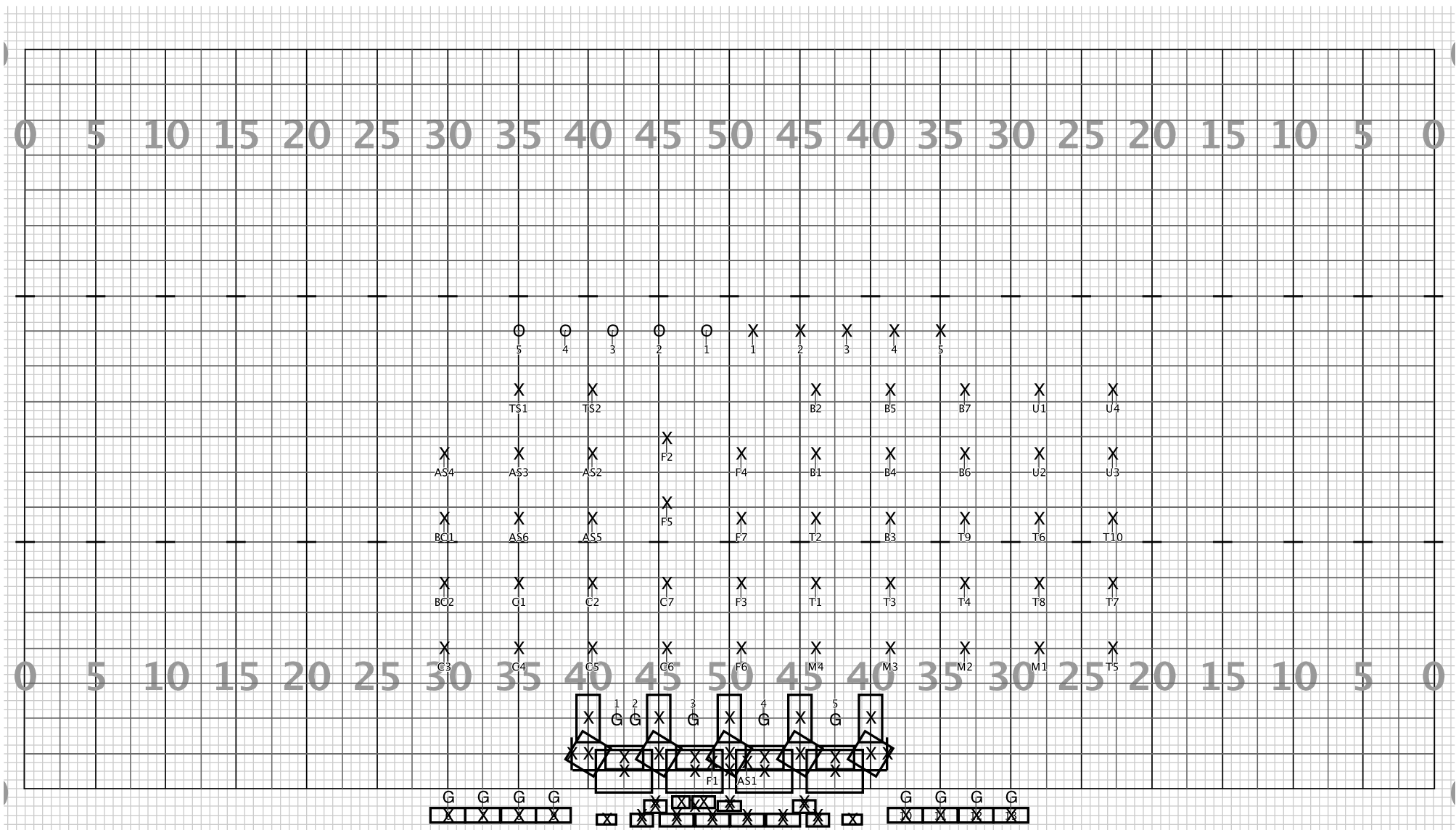


Director Viewpoint

Set #34 Counts: 0 Measures:

Part 2

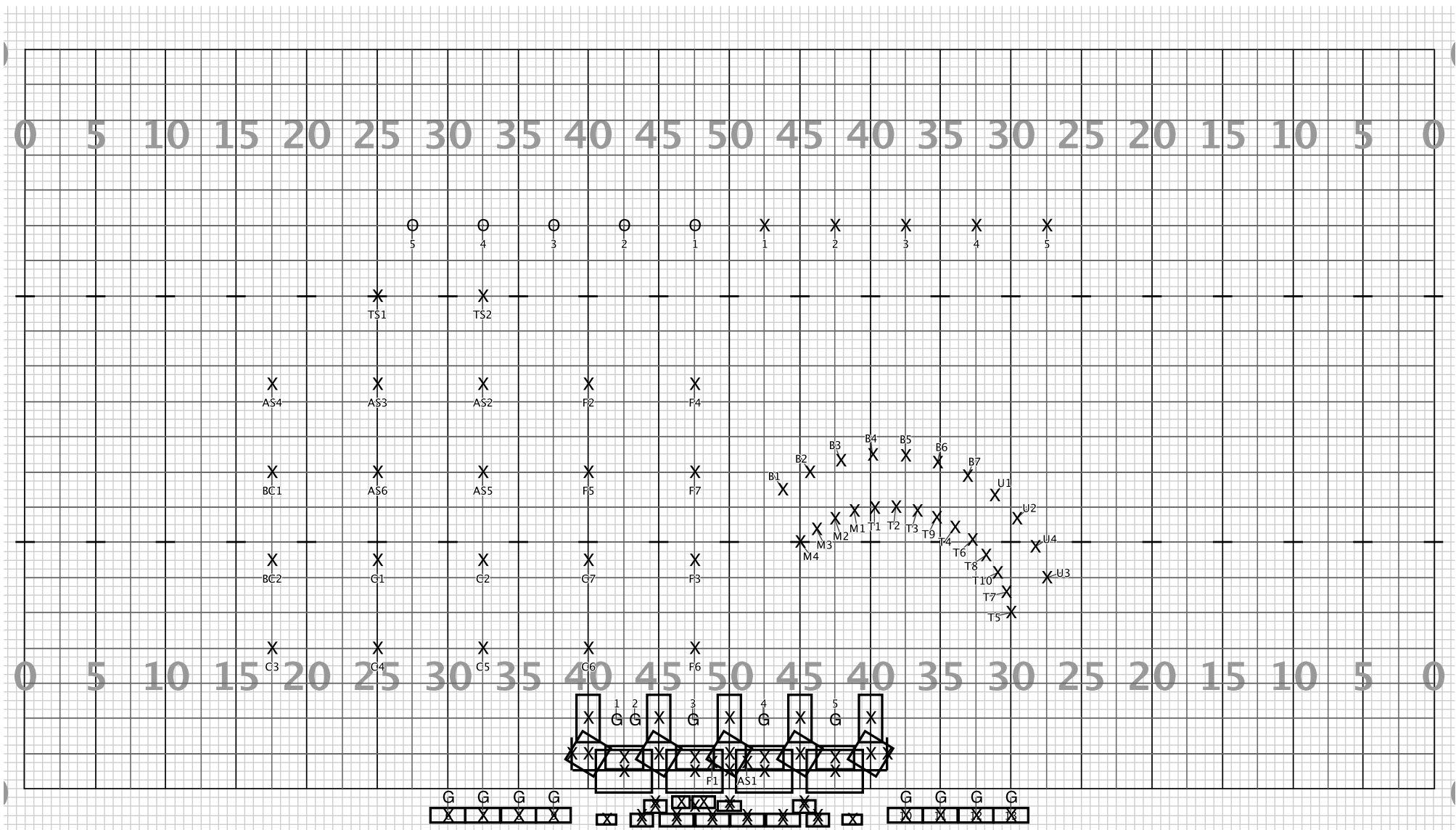


Director Viewpoint

Set #35 Counts: 28 Measures: 1 - 7

Guard and Soloists Restage
All Else Hold 8, Move 20

Part 2

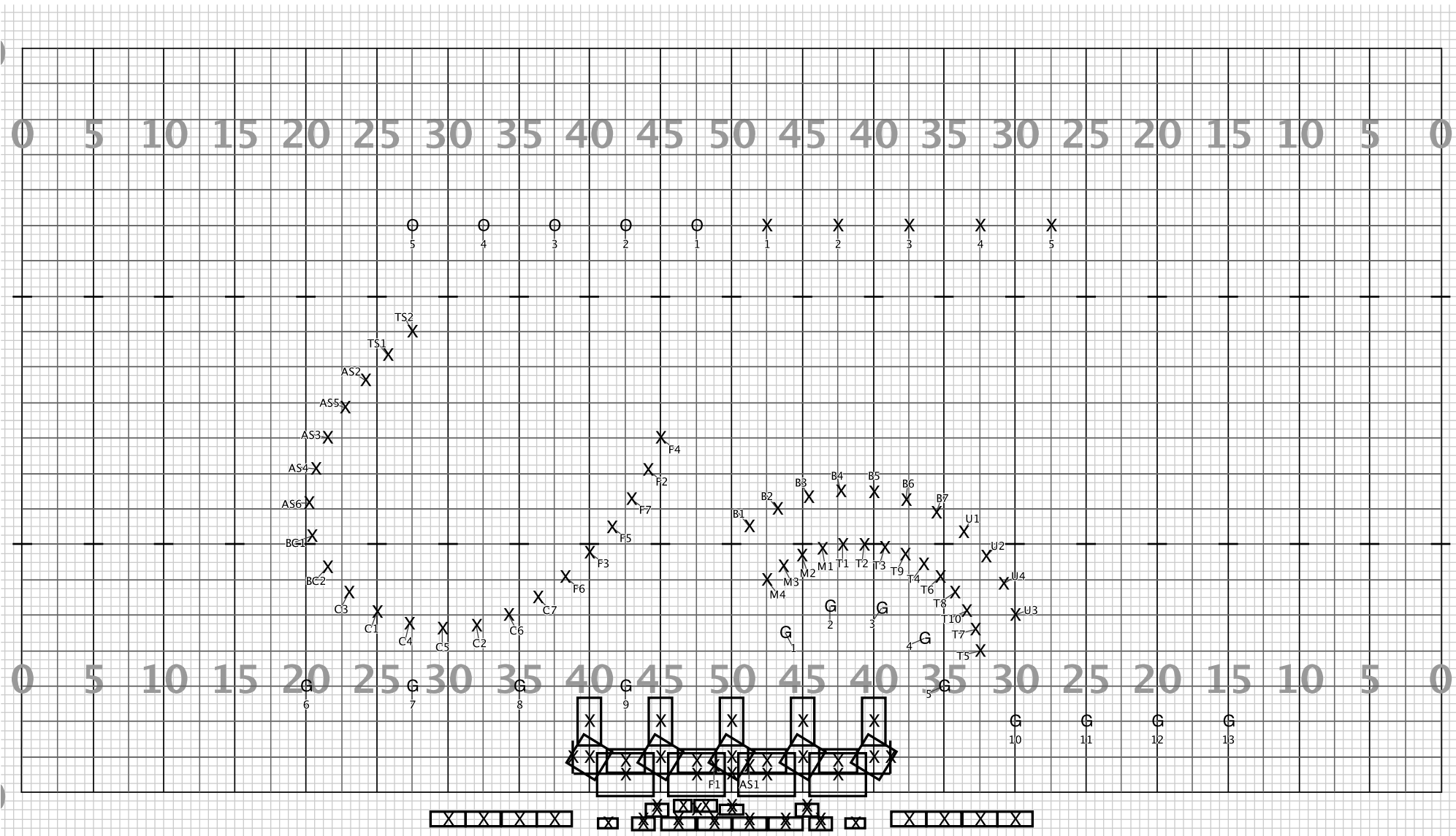


Director Viewpoint

Set #36 Counts: 16 Measures: 8 - 11

All Move 16

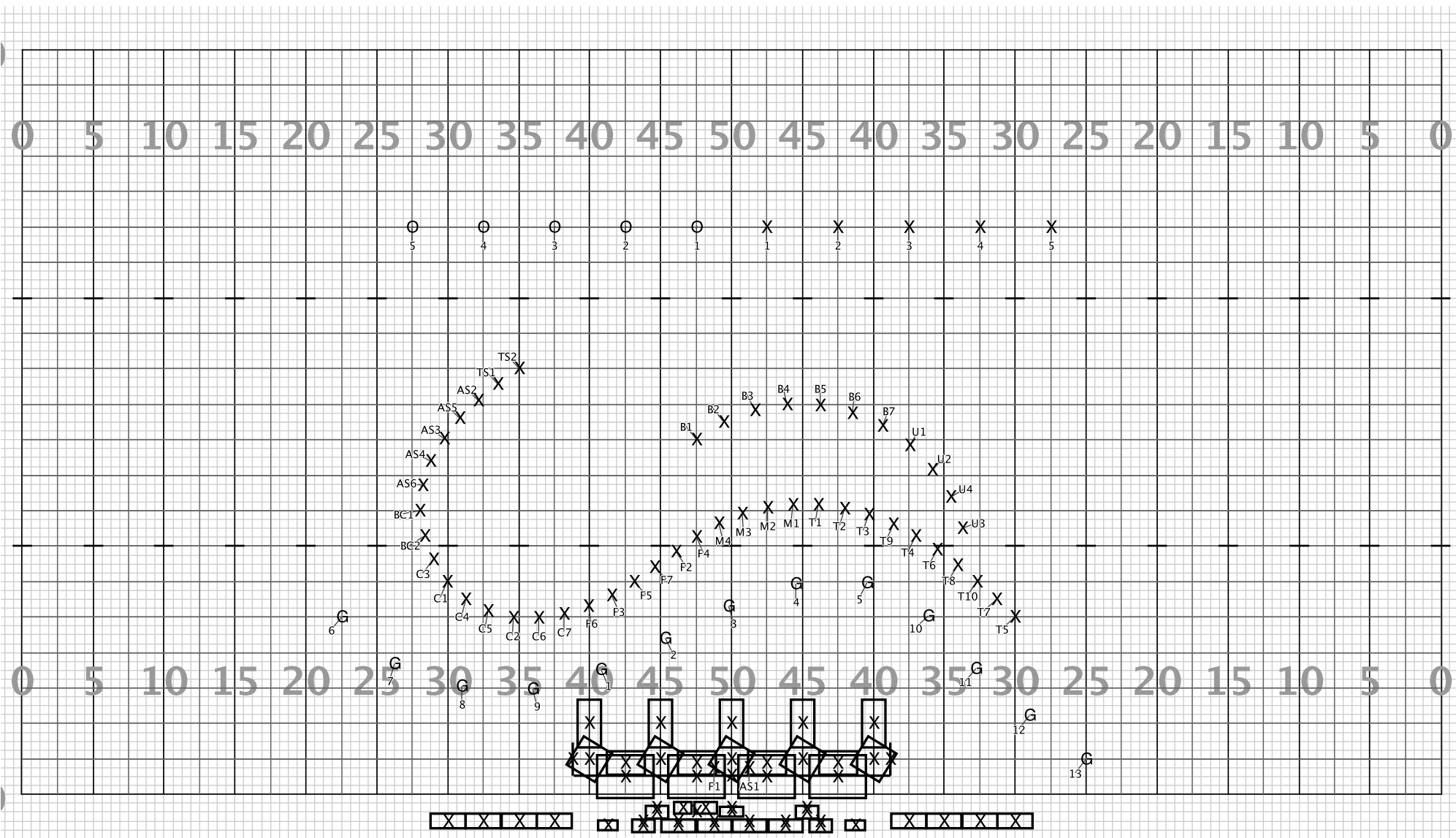
Part 2



Set #37 Counts: 16 Measures: 12 - 15

All Move 16

Part 2

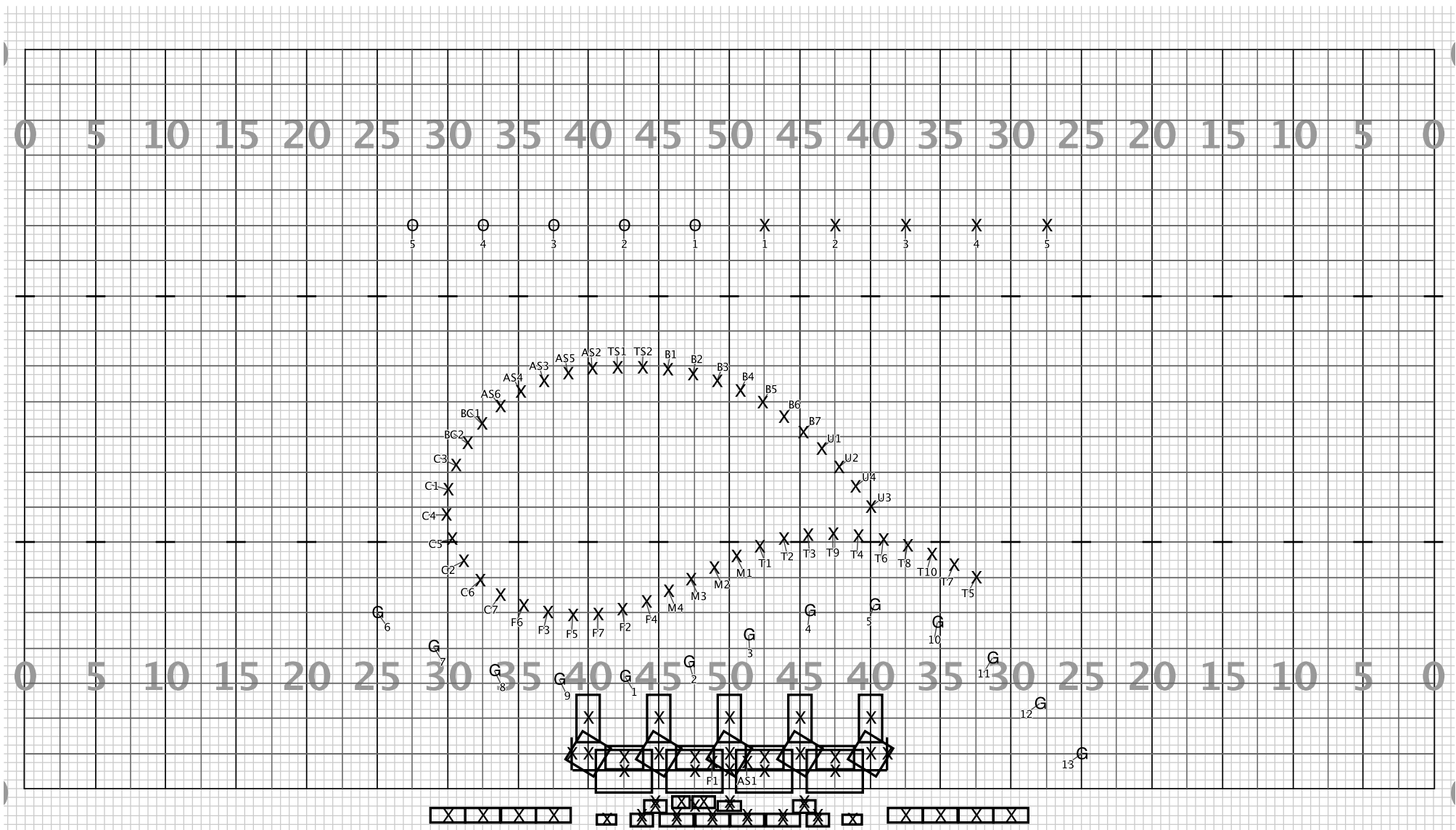


Director Viewpoint

Set #38 Counts: 20 Measures: 17 - 20

All Move 16

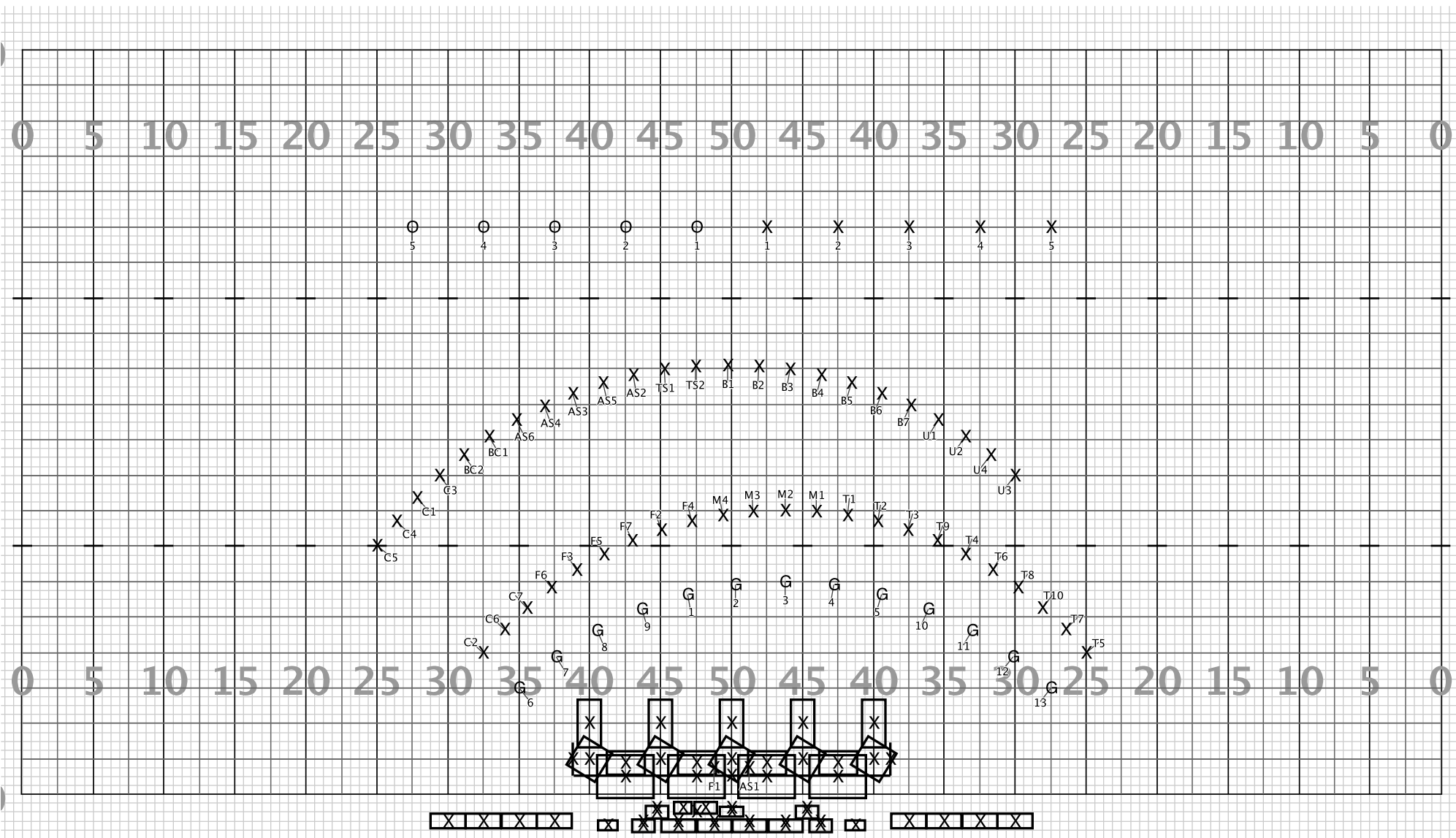
Part 2



Set #39 Counts: 30 Measures: 21 - 28

All Move 16, Hold 14

Part 2

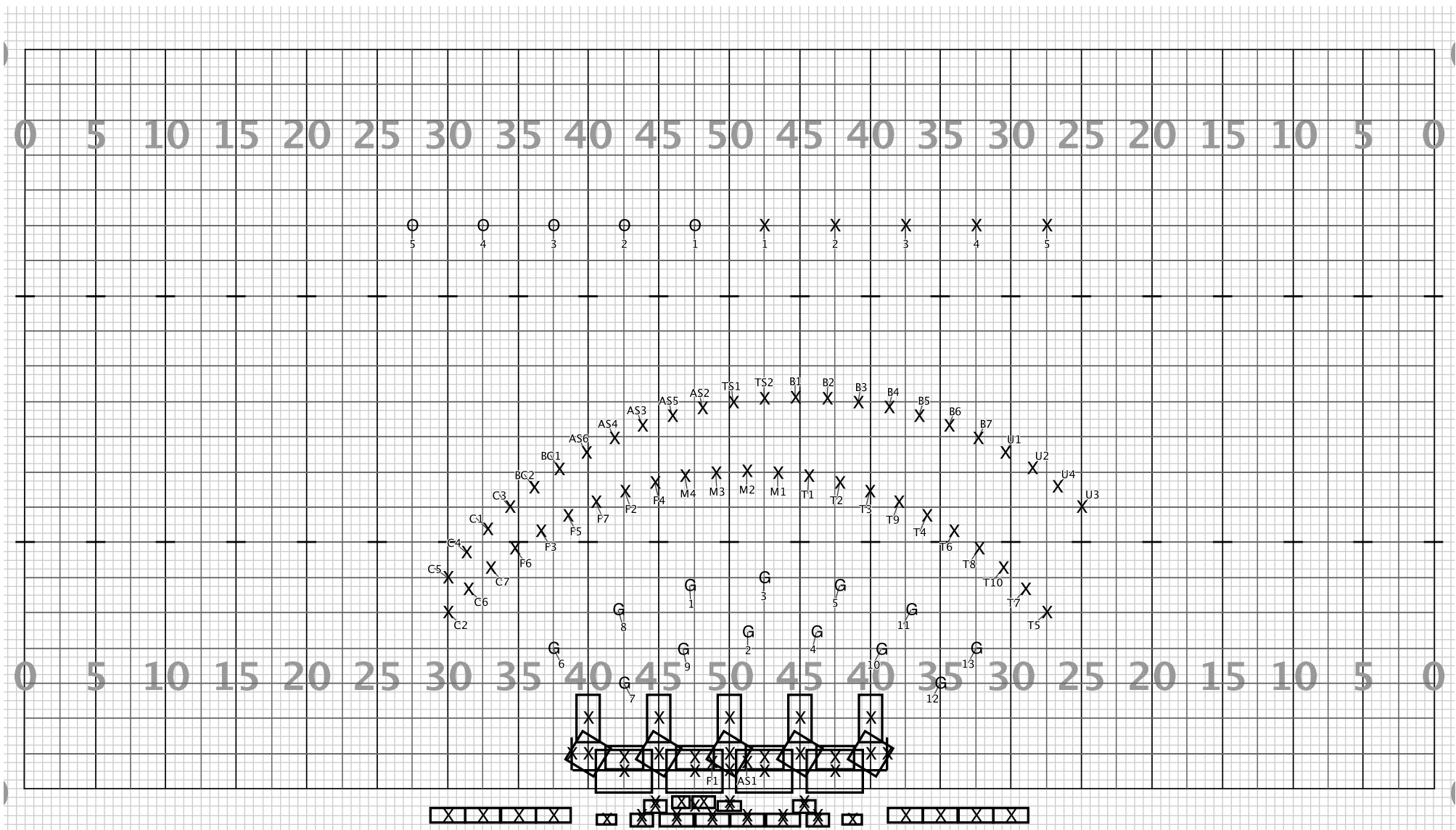


Director Viewpoint

Set #40 Counts: 16 Measures: 29 - 32

All Move 16

Part 2

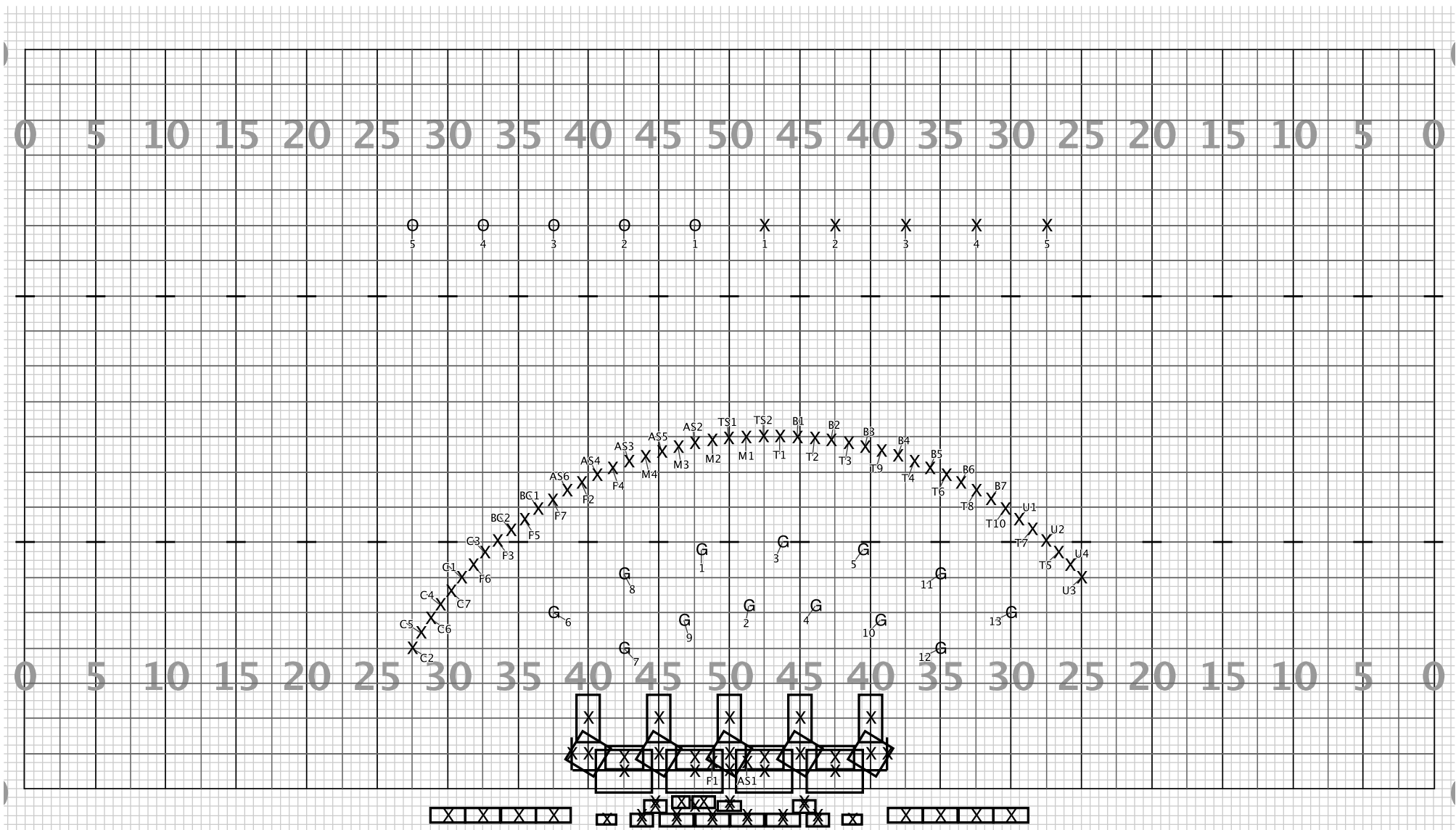


Director Viewpoint

Set #41 Counts: 8 Measures: 33 - 34

All Move 8

Part 2

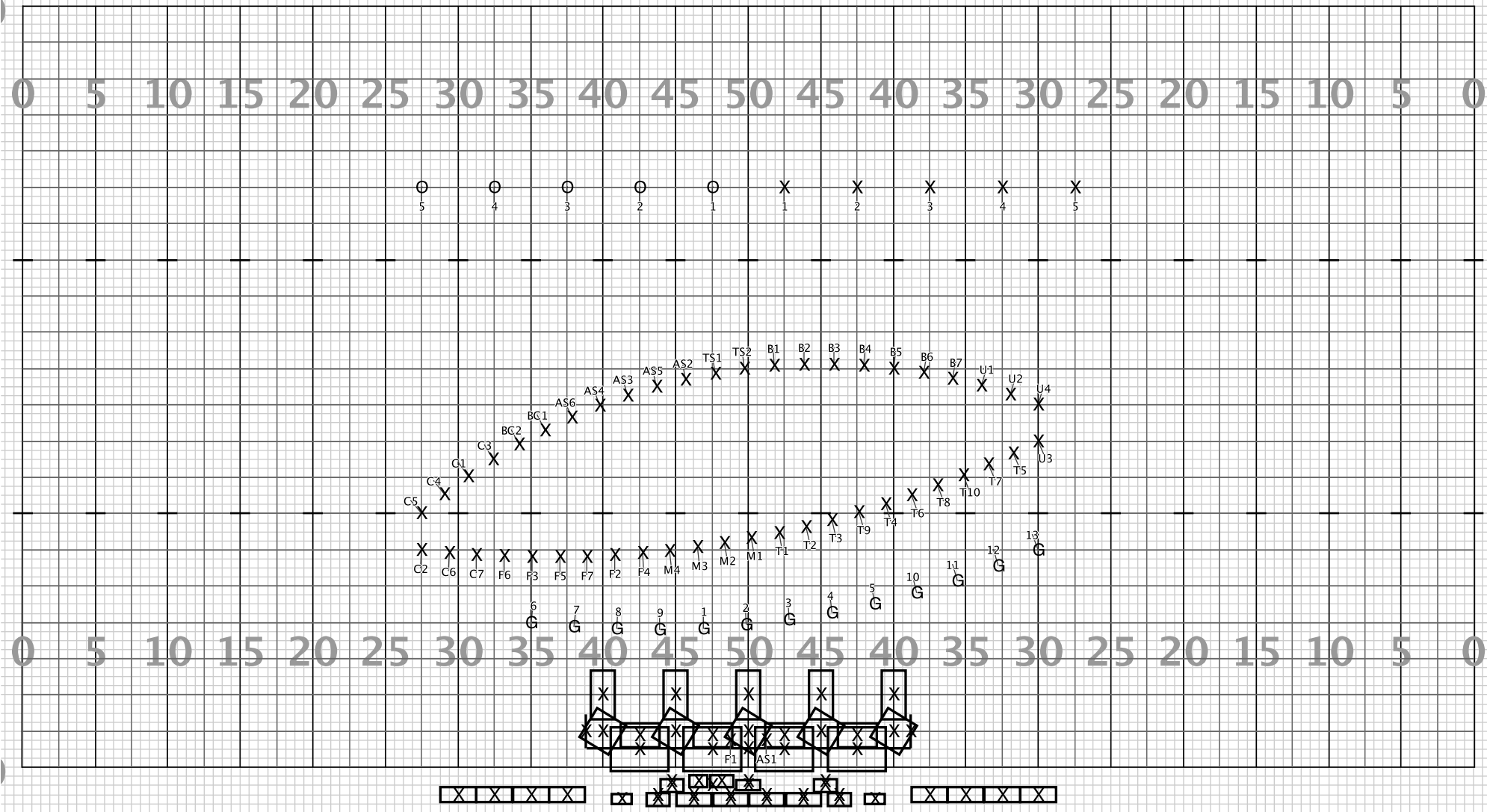


Director Viewpoint

Set #42 Counts: 20 Measures: 35 - 40

All Move 8, Hold 12

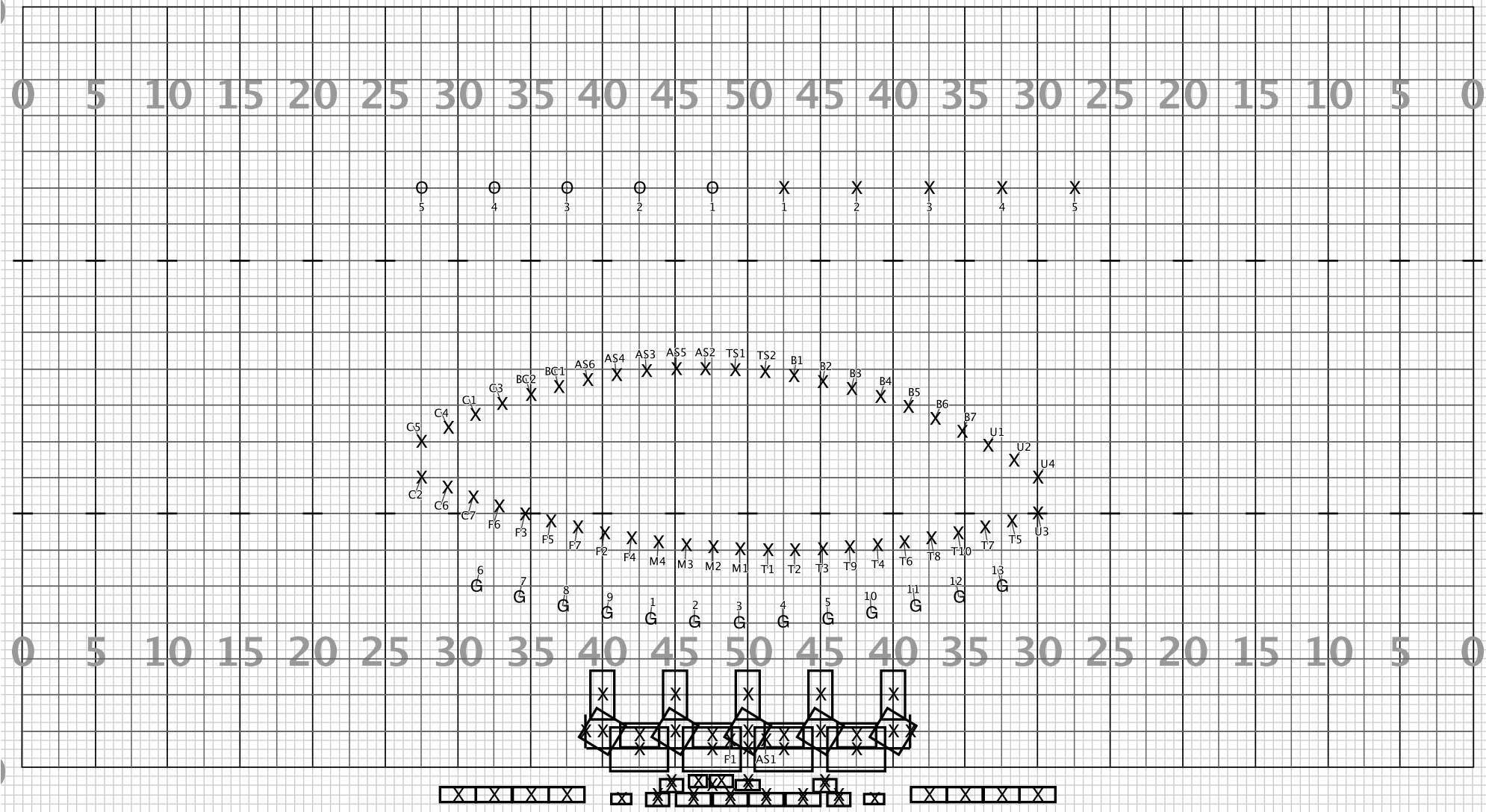
Part 2



Set #43 Counts: 16 Measures: 41 - 44

All Move 16

Part 2



Director Viewpoint

Set #44 Counts: 20 Measures: 45 - 49

All Move 8, Hold to End